



Self-diagnosis D4 indicator light blinks four times.

Raise the car.

Shift transmission to **N**.

Disconnect the E (26P) and C (12P) connectors from the ECU. Connect the Test Harness "A" and "C" connectors to the wire harness only, not to the ECU. (14-47)

Turn the ignition switch ON.

Rotate the front wheel and check for voltage between the C2 and A3/A4 terminals. Block the other wheel so it does not turn.

Does the voltage 0–5 V appear alternately?

YES

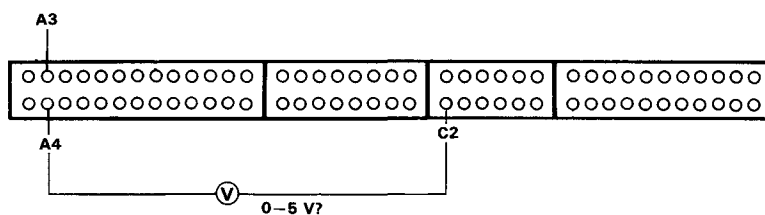
Check for loose ECU connectors. If necessary, substitute a known-good ECU and recheck.

NO

Check for short or open in YEL/RED wire between the C2 terminal and the speed sensor. If wire is OK, check the speed sensor. See [Section 23](#).

**⚠ WARNING** Make sure lifts, jacks and safety stands are placed properly. (See page [1-6](#).)

NOTE: The section A of the Test Harness with the Test Harness Adapter corresponds to the E (26P) connector of the ECU.



(cont'd)